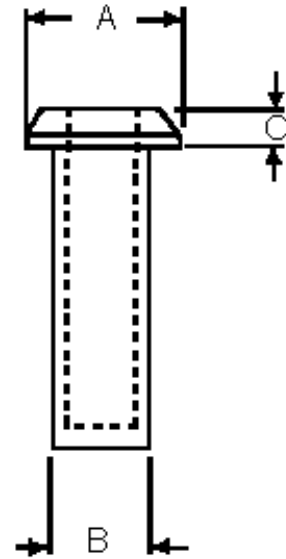


FASTENERS

Ratchet Assembly Post and Screw



**RACHET ASSEMBLY POST AND SCREW
ARE NOT INTENDED FOR APPLICATIONS
REQUIRING A REUSABLE FASTENER**

A = 9.5mm B = 6.1mm C = 2.5mm

Ratchet assembly post and screw offer a more secure assembly than our rapid assembly post and screw. Ratchet assembly post and screw feature screws with serrated pins which allow variable assembly.

Simply press together for fast easy assembly. Parts ratchet together automatically to secure flat panels, punched papers, fabric swatches, key cases, calendars, catalogues, cardboard panels and a variety of other objects.

Ratchet assembly post and screw are supplied in a rugged polypropylene making them useful for corrosive environments. They will not mark or mar most surfaces. Parts are stocked in black or white.

Part Number	Colour	Length	Part Number	Colour	Length
12751	Black	6.4mm (1/4")	12752	White	6.4mm (1/4")
12753	Black	9.5mm (3/8")	12754	White	9.5mm (3/8")
12755	Black	12.7mm (1/2")	12756	White	12.7mm (1/2")
12757	Black	19mm (3/4")	12758	White	19mm (3/4")