

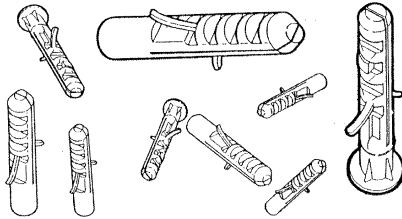
FASTENERS

- 3-1 Anchors - Standard Nylon Wall
- 3-2 Anchors - Cavity Fixing Nylon Wall
- 3-3 Post & Screw Assemblies Standard
- 3-4 Post & Screw Assemblies Standard
- 3-5 Post & Screw Assemblies Standard
- 3-6 Post & Screw Assemblies Large Head
- 3-7 Post & Screw Assemblies Small Dia, & Ext Screws
- 3-8 Ratchet Assembly Post & Screws
- 3-9 Pop Rivets
- 3-10 Push Rivets

FASTENERS

ES SERIES IN NYLON 6

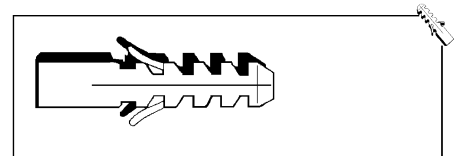
STANDARD NYLON ANCHORS FOR SCREW FIXING IN ALL SUPPORTING MATERIALS



TYPICAL APPLICATIONS

- ✿ CONCRETE
- ✿ BRICKWORK
- ✿ BLOCK WORK
- ✿ ALL COMPACT MATERIALS

- ✿ FASTENING WITH WOOD SCREWS
- ✿ EQUIPPED WITH ANTI-ROTATION FINS
- ✿ TEMPERATURE RESISTANT FROM -40°C TO +100°C
- ✿ SELF CENTRING INTERNAL SCREW GUIDE
- ✿ EXTERNAL FLANGE TO COVER POSSIBLE DRILL HOLE CHIPPING
- ✿ PULLOUT VALUES MEET SPECIFICATIONS OF MOST COMMON DEMANDS
- ✿ PRODUCTS ARE MANUFACTURED WITH HIGH PRECISION MOLDS AND MATERIALS MEET MIL AND UL STANDARDS



| ANCHOR TYPE | PART NUMBER | | Ø DRILL (mm) | ANCHOR LENGTH (mm) | Ø ANCHOR (mm) | DEPTH DRILL-HOLE (mm) | Ø WOOD SCREW (mm) |
|-------------|-------------|--------|--------------|--------------------|---------------|-----------------------|-------------------|
| | WITH LIP | NO LIP | | | | | |
| ES4 | - | 12001 | 4 | 20 | 4 | 30 | 2 - 3 |
| ES5 | 12012 | 12002 | 5 | 25 | 5 | 35 | 2.5 - 4 |
| ES6 | 12013 | 12003 | 6 | 30 | 6 | 40 | 3.5 - 4 |
| ES7 | 12014 | 12004 | 7 | 30 | 7 | 40 | 4.5 - 5 |
| ES8 | 12015 | 12005 | 8 | 40 | 8 | 55 | 4.5 - 6 |
| ES10 | 12016 | 12006 | 10 | 50 | 10 | 65 | 6 - 8 |
| ES12 | 12017 | 12007 | 12 | 60 | 12 | 75 | 8 - 10 |
| ES14 | - | 12008 | 14 | 80 | 14 | 100 | 10 - 12 |

RECOMMENDED SAFE WORKING LOADS in Kn = Kilonewton (1Kn = 100 Kg) (Using maximum screw diameter suggested)

| Material | ES4 | ES5 | ES6 | ES7 | ES8 | ES10 | ES12 | ES14 |
|-----------------------|------|------|-----|-----|-----|------|------|------|
| Cement R250 | 0.78 | 2.0 | 3.3 | 3.9 | 4.7 | 9.5 | 11.5 | 19 |
| Full Brick | 0.52 | 1.85 | 2.6 | 3.3 | 4.2 | 4.5 | 4.4 | |
| Perforated Brick | 0.42 | 1.25 | 2.3 | 2.7 | 3.2 | 4.7 | 4.9 | |
| Lightweight Cement 50 | 0.19 | 0.75 | 0.9 | 1.1 | 1.4 | 3.3 | 3.9 | |
| Lightweight Cement 55 | 0.10 | 0.65 | 0.9 | 1.0 | 1.1 | 1.9 | 3.3 | |

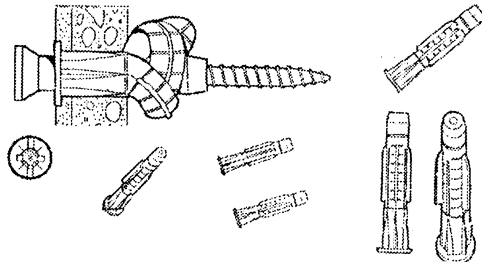
IMPORTANT : A good rule is to consider an adequate safety coefficient.

FASTENERS

TPF SERIES

A LIGHT DUTY CAVITY FIXING KNOTTING ANCHOR

FIXING WITH SCREWS & HOOKS IN:



- ✿ SHALLOW CAVITIES
LIGHTWEIGHT BLOCK WORK
PERFORATED BRICK
PLASTERBOARDS PLYWOOD
- ✿ COMPACT MATERIAL
CONCRETE
BRICKS
SEMI FULL BRICKS ETC.....

- ✿ GREATER EXPANSION AND GRIP IN COMPACT MATERIAL
- ✿ OVERCOMES PROBLEM OF HOLLOW SPACE CAVITY FIXINGS
- ✿ ANCHORS KNOTTING TAKES PLACE BY RETRACTION OF PLUG ONTO THE SCREW

| ANCHOR TYPE | PART NUMBER | Ø DRILL (mm) | ANCHOR LENGTH (mm) | Ø ANCHOR (mm) | DEPTH DRILL-HOLE (mm) | Ø WOOD SCREW (mm) | TPF SERIES |
|-------------|-------------|--------------|--------------------|---------------|-----------------------|-------------------|------------|
| 6 x 37 | 12021 | 6 | 37 | 6 | 40 | 4 - 5 | NO LIP |
| 8 x 50 | 12022 | 8 | 50 | 8 | 55 | 5 - 6 | NO LIP |
| 10 x 60 | 12023 | 10 | 60 | 10 | 65 | 6 - 8 | NO LIP |
| 6 x 38 | 12026 | 6 | 38 | 6 | 40 | 4 - 5 | WITH LIP |
| 8 x 51 | 12027 | 8 | 51 | 8 | 55 | 5 - 6 | WITH LIP |
| 10 x 61 | 12028 | 10 | 61 | 10 | 65 | 6 - 8 | WITH LIP |

IMPORTANT: IN CAVITY FIXING IT IS IMPORTANT TO TURN THE SCREW AN ADDITIONAL 1 OR 2 TIMES TO ENSURE COMPLETE KNOTTING OF THE ANCHOR AND ADEQUATE FIXING IN THE HOLLOW SPACE.

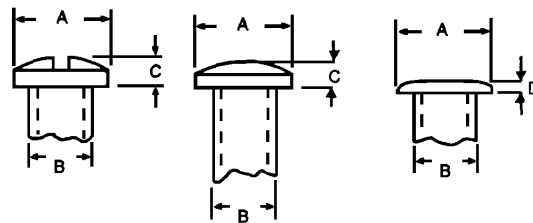
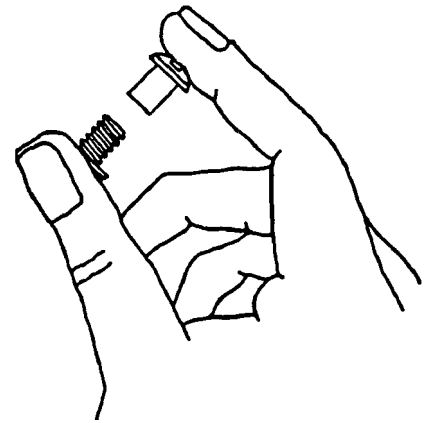
PLASTIC SCREW ANCHORS

| PART NUMBER | Dia | Length | For Screw |
|-------------|------|--------|-----------|
| 12031 | 5mm | 19mm | 3.0mm |
| 12032 | 6mm | 22mm | 4.0mm |
| 12033 | 8mm | 26mm | 5.0mm |
| 12034 | 10mm | 34mm | 6.0mm |



Rapid Assembly Post and Screw

FASTENERS



A = 9.5mm B = 6.1mm C = 2.5mm D = 1.0mm

Bind together punched papers, fabric swatches key cases and a multitude of other objects. Post and Screw packaged separately in bulk bags. Rapid Assembly Posts are manufactured in polyethylene. Rapid Assembly Screws are manufactured in nylon.

| Part Number | Headstyle | Colour | Length |
|-------------|------------------|--------|------------------|
| 12494 | Binder Slotted | White | 4.75mm (3/16") |
| 12495 | Binder Unslotted | White | 4.75mm (3/16") |
| 12496 | Thin Unslotted | White | 4.75mm (3/16") |
| 12497 | Binder Slotted | Black | 4.75mm (3/16") |
| 12498 | Binder Unslotted | Black | 4.75mm (3/16") |
| 12499 | Thin Unslotted | Black | 4.75mm (3/16") |
| 12501 | Binder Slotted | White | 6.4mm (1/4") |
| 12502 | Binder Unslotted | White | 6.4mm (1/4") |
| 12503 | Thin Unslotted | White | 6.4mm (1/4") |
| 12504 | Binder Slotted | Black | 6.4mm (1/4") |
| 12505 | Binder Unslotted | Black | 6.4mm (1/4") |
| 12506 | Thin Unslotted | Black | 6.4mm (1/4") |
| 12507 | Binder Slotted | White | 9.5mm (3/8") |
| 12508 | Binder Unslotted | White | 9.5mm (3/8") |
| 12509 | Thin Unslotted | White | 9.5mm (3/8") |
| 12510 | Binder Slotted | Black | 9.5mm (3/8") |
| 12511 | Binder Unslotted | Black | 9.5mm (3/8") |
| 12512 | Thin Unslotted | Black | 9.5mm (3/8") |
| 12513 | Binder Slotted | White | 12.7mm (1/2") |
| 12514 | Binder Unslotted | White | 12.7mm (1/2") |
| 12515 | Thin Unslotted | White | 12.7mm (1/2") |
| 12516 | Binder Slotted | Black | 12.7mm (1/2") |
| 12517 | Binder Unslotted | Black | 12.7mm (1/2") |
| 12518 | Thin Unslotted | Black | 12.7mm (1/2") |

FASTENERS

No Special Tools Required ...



SIMPLY PRESS
TOGETHER FOR FAST
EASY ASSEMBLY

- ◆ 6.4mm length screw used with 6.4mm post
- ◆ 17.5mm length screw used with 22 - 50mm post
- ◆ 9.5mm length screw used with 9.5 - 19mm post

| Part Number | Headstyle | Colour | Length |
|-------------|------------------|--------|-----------------|
| 12519 | Binder Slotted | White | 19mm (3/4") |
| 12520 | Binder Unslotted | White | 19mm (3/4") |
| 12521 | Thin Unslotted | White | 19mm (3/4") |
| 12522 | Binder Slotted | Black | 19mm (3/4") |
| 12523 | Binder Unslotted | Black | 19mm (3/4") |
| 12524 | Thin Unslotted | Black | 19mm (3/4") |
| 12525 | Binder Slotted | White | 22mm (7/8") |
| 12526 | Binder Unslotted | White | 22mm (7/8") |
| 12527 | Thin Unslotted | White | 22mm (7/8") |
| 12528 | Binder Slotted | Black | 22mm (7/8") |
| 12529 | Binder Unslotted | Black | 22mm (7/8") |
| 12530 | Thin Unslotted | Black | 22mm (7/8") |
| 12531 | Binder Slotted | White | 25mm (1") |
| 12532 | Binder Unslotted | White | 25mm (1") |
| 12533 | Thin Unslotted | White | 25mm (1") |
| 12534 | Binder Slotted | Black | 25mm (1") |
| 12535 | Binder Unslotted | Black | 25mm (1") |
| 12536 | Thin Unslotted | Black | 25mm (1") |
| 12537 | Binder Slotted | White | 32mm (1 1/4") |
| 12538 | Binder Unslotted | White | 32mm (1 1/4") |
| 12539 | Thin Unslotted | White | 32mm (1 1/4") |
| 12540 | Binder Slotted | Black | 32mm (1 1/4") |
| 12541 | Binder Unslotted | Black | 32mm (1 1/4") |
| 12542 | Thin Unslotted | Black | 32mm (1 1/4") |

FASTENERS

No Special Tools Required ...



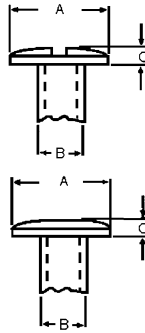
SIMPLY PRESS
TOGETHER FOR FAST
EASY ASSEMBLY

- ◆ 6.4mm length screw used with 6.4mm post
- ◆ 17.5mm length screw used with 22 - 50mm post
- ◆ 9.5mm length screw used with 9.5 - 19mm post

| Part Number | Headstyle | Colour | Length |
|-------------|------------------|--------|-----------------|
| 12543 | Binder Slotted | White | 35mm (1 3/8") |
| 12544 | Binder Unslotted | White | 35mm (1 3/8") |
| 12545 | Thin Unslotted | White | 35mm (1 3/8") |
| 12546 | Binder Slotted | Black | 35mm (1 3/8") |
| 12547 | Binder Unslotted | Black | 35mm (1 3/8") |
| 12548 | Thin Unslotted | Black | 35mm (1 3/8") |
| 12549 | Binder Slotted | White | 38mm (1 1/2") |
| 12550 | Binder Unslotted | White | 38mm (1 1/2") |
| 12551 | Thin Unslotted | White | 38mm (1 1/2") |
| 12552 | Binder Slotted | Black | 38mm (1 1/2") |
| 12553 | Binder Unslotted | Black | 38mm (1 1/2") |
| 12554 | Thin Unslotted | Black | 38mm (1 1/2") |
| 12555 | Binder Slotted | White | 45mm (1 3/4") |
| 12556 | Binder Unslotted | White | 45mm (1 3/4") |
| 12557 | Thin Unslotted | White | 45mm (1 3/4") |
| 12558 | Binder Slotted | Black | 45mm (1 3/4") |
| 12559 | Binder Unslotted | Black | 45mm (1 3/4") |
| 12560 | Thin Unslotted | Black | 45mm (1 3/4") |
| 12561 | Binder Slotted | White | 50mm (2") |
| 12562 | Binder Unslotted | White | 50mm (2") |
| 12563 | Thin Unslotted | White | 50mm (2") |
| 12564 | Binder Slotted | Black | 50mm (2") |
| 12565 | Binder Unslotted | Black | 50mm (2") |
| 12566 | Thin Unslotted | Black | 50mm (2") |

FASTENERS

Larger Head Diameter



Rapid Assembly Posts are manufactured in POLYETHYLENE. Rapid Assembly Screws are manufactured in NYLON

Large 14mm (9/16") diameter head helps prevent the head from being pulled through soft materials. Bind together punched papers, fabric swatches, key cases and a multitude of other objects.

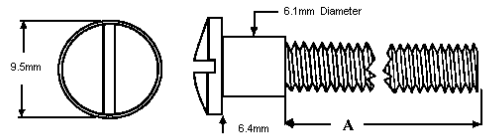
A = 14.3mm B = 6.1mm C = 2.5mm

6.4mm length screw used with 6.4mm post, 9.5mm length screw used with 9.5 -19mm post, 17.5mm length screw used with 25.4 - 50mm post

| Part Number | Headstyle | Colour | Length |
|-------------|------------------|--------|-----------------|
| 12601 | Binder Slotted | White | 6.4mm (1/4") |
| 12602 | Binder Slotted | Black | 6.4mm (1/4") |
| 12603 | Binder Unslotted | White | 6.4mm (1/4") |
| 12604 | Binder Unslotted | Black | 6.4mm (1/4") |
| 12605 | Binder Slotted | White | 9.5mm (3/8") |
| 12606 | Binder Slotted | Black | 9.5mm (3/8") |
| 12607 | Binder Unslotted | White | 9.5mm (3/8") |
| 12608 | Binder Unslotted | Black | 9.5mm (3/8") |
| 12609 | Binder Slotted | White | 12.7mm (1/2") |
| 12610 | Binder Slotted | Black | 12.7mm (1/2") |
| 12611 | Binder Unslotted | White | 12.7mm (1/2") |
| 12612 | Binder Unslotted | Black | 12.7mm (1/2") |
| 12613 | Binder Slotted | White | 19mm (3/4") |
| 12614 | Binder Slotted | Black | 19mm (3/4") |
| 12615 | Binder Unslotted | White | 19mm (3/4") |
| 12616 | Binder Unslotted | Black | 19mm (3/4") |
| 12617 | Binder Slotted | White | 25.4mm (1") |
| 12618 | Binder Slotted | Black | 25.4mm (1") |
| 12619 | Binder Unslotted | White | 25.4mm (1") |
| 12620 | Binder Unslotted | Black | 25.4mm (1") |
| 12621 | Binder Slotted | White | 32mm (1 1/4") |
| 12622 | Binder Slotted | Black | 32mm (1 1/4") |
| 12623 | Binder Unslotted | White | 32mm (1 1/4") |
| 12624 | Binder Unslotted | Black | 32mm (1 1/4") |
| 12625 | Binder Slotted | White | 35mm (1 3/8") |
| 12626 | Binder Slotted | Black | 35mm (1 3/8") |
| 12627 | Binder Unslotted | White | 35mm (1 3/8") |
| 12628 | Binder Unslotted | Black | 35mm (1 3/8") |
| 12629 | Binder Slotted | White | 38mm (1 1/2") |
| 12630 | Binder Slotted | Black | 38mm (1 1/2") |
| 12631 | Binder Unslotted | White | 38mm (1 1/2") |
| 12632 | Binder Unslotted | Black | 38mm (1 1/2") |
| 12633 | Binder Slotted | White | 45mm (1 3/4") |
| 12634 | Binder Slotted | Black | 45mm (1 3/4") |
| 12635 | Binder Unslotted | White | 45mm (1 3/4") |
| 12636 | Binder Unslotted | Black | 45mm (1 3/4") |
| 12637 | Binder Slotted | White | 50mm (2") |
| 12638 | Binder Slotted | Black | 50mm (2") |
| 12639 | Binder Unslotted | White | 50mm (2") |
| 12640 | Binder Unslotted | Black | 50mm (2") |

FASTENERS

Extension Screws



| Part Number | "A" | Part Number | "A" |
|-------------|-----------------|-------------|-----------------|
| White | | Black | |
| 12721 | 9.5mm (3/8") | 12722 | 9.5mm (3/8") |
| 12723 | 12.7mm (1/2") | 12724 | 12.7mm (1/2") |
| 12725 | 16mm (5/8") | 12726 | 16mm (5/8") |
| 12727 | 25.4mm (1") | 12728 | 25.4mm (1") |

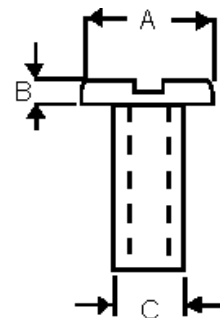
Extension screws will extend any length post by a further 1/4". Extension screws can be shipped separately or can be substituted for the standard screws normally shipped with the Rapid Assembly Post and Screw set. Call for pricing for substitutions.

Smaller Diameter Posts

Slotted Binder Headstyle

A = 9.5mm B = 1.8mm C = 5.2mm

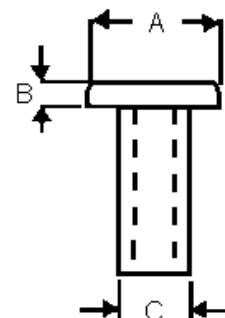
| Part Number | Colour | Length |
|-------------|--------|-----------------|
| 12701 | White | 6.4mm (1/4") |
| 12702 | Black | 6.4mm (1/4") |
| 12703 | White | 9.5mm (3/8") |
| 12704 | Black | 9.5mm (3/8") |
| 12705 | White | 12.7mm (1/2") |
| 12706 | Black | 12.7mm (1/2") |
| 12707 | White | 19mm (3/4") |
| 12708 | Black | 19mm (3/4") |
| 12709 | White | 22mm (7/8") |
| 12710 | Black | 22mm (7/8") |



Unslotted Binder Headstyle

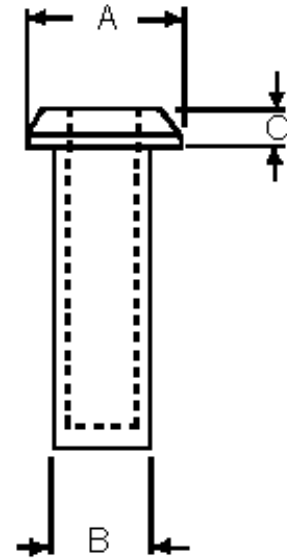
A = 9.5mm B = 1.8mm C = 5.2mm

| Part Number | Colour | Length |
|-------------|--------|---------------|
| 12711 | White | 25.4mm (1") |
| 12712 | Black | 25.4mm (1") |
| 12713 | White | 50.8mm (2") |
| 12714 | Black | 50.8mm (2") |



FASTENERS

Ratchet Assembly Post and Screw



RACHET ASSEMBLY POST AND SCREW ARE NOT INTENDED FOR APPLICATIONS REQUIRING A REUSABLE FASTENER

A = 9.5mm B = 6.1mm C = 2.5mm

Ratchet assembly post and screw offer a more secure assembly than our rapid assembly post and screw. Ratchet assembly post and screw feature screws with serrated pins which allow variable assembly.

Simply press together for fast easy assembly. Parts ratchet together automatically to secure flat panels, punched papers, fabric swatches, key cases, calendars, catalogues, cardboard panels and a variety of other objects.

Ratchet assembly post and screw are supplied in a rugged polypropylene making them useful for corrosive environments. They will not mark or mar most surfaces. Parts are stocked in black or white.

| Part Number | Colour | Length | Part Number | Colour | Length |
|-------------|--------|-----------------|-------------|--------|-----------------|
| 12751 | Black | 6.4mm (1/4") | 12752 | White | 6.4mm (1/4") |
| 12753 | Black | 9.5mm (3/8") | 12754 | White | 9.5mm (3/8") |
| 12755 | Black | 12.7mm (1/2") | 12756 | White | 12.7mm (1/2") |
| 12757 | Black | 19mm (3/4") | 12758 | White | 19mm (3/4") |

FASTENERS

POP RIVETS NYLON

| Part No. | | | | Dia. (mm) | Panel Thickness (mm) | Tensile Strength | Shear Strength |
|----------|-------|---------------|---------------|--------------|----------------------------|---------------------|-------------------|
| Black | White | Black U.V. | White U.V. | | | | |
| 12401 | 12402 | 12801 | 12802 | 3.2 | 1.0 – 3.5 | 12kg | 20kg |
| 12405 | 12406 | 12805 | 12806 | 3.2 | 3.5 – 6.5 | | |
| 12409 | 12410 | 12809 | 12810 | 3.2 | 6.5 – 9.5 | | |
| 12413 | 12414 | 12813 | 12814 | 4.0 | 1.0 – 3.5 | 18kg | 25kg |
| 12417 | 12418 | 12817 | 12818 | 4.0 | 3.5 – 6.0 | | |
| 12421 | 12422 | 12821 | 12822 | 4.0 | 6.0 – 9.0 | | |
| 12425 | 12426 | 12825 | 12826 | 4.8 | 1.5 – 4.5 | 28kg | 40kg |
| 12429 | 12430 | 12829 | 12830 | 4.8 | 4.5 – 7.5 | | |
| 12433 | 12434 | 12833 | 12834 | 4.8 | 7.5 – 10.5 | | |
| 12437 | 12438 | 12837 | 12838 | 5.6 | 2.0 – 5.0 | 40kg | 65kg |
| 12441 | 12442 | 12841 | 12842 | 5.6 | 5.0 – 8.0 | | |
| 12445 | 12446 | 12845 | 12846 | 5.6 | 8.0 – 11.5 | | |

Also available in assorted colours call for details

Nylon pop rivets work like normal aluminium rivets plus give protection against corrosion and electrical hazard.

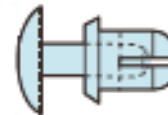


FASTENERS

PUSH RIVETS NYLON

| Part No. | | Dia. (mm) | Panel Thickness (mm) |
|--|-------|-----------|----------------------|
| Black | White | | |
| 12230 | 12231 | 2.0 | 0.6 – 1.2 |
| 12232 | 12233 | 2.0 | 1.3 – 2.0 |
| 12234 | 12235 | 2.0 | 2.1 – 2.8 |
| 12236 | 12237 | 2.0 | 2.9 – 3.6 |
| 12238 | 12239 | 2.0 | 3.7 – 4.4 |
| 12240 | 12241 | 2.0 | 4.4 – 5.0 |
| 12242 | 12243 | 2.5 | 1.0 – 2.0 |
| 12244 | 12245 | 2.5 | 2.0 – 3.0 |
| 12246 | 12247 | 2.5 | 2.7 – 3.6 |
| 12248 | 12249 | 2.5 | 3.4 – 4.3 |
| 12250 | 12251 | 2.5 | 4.3 – 5.2 |
| 12252 | 12253 | 2.5 | 5.1 – 6.0 |
| 12254 | 12255 | 3.0 | 1.0 – 2.0 |
| 12256 | 12257 | 3.0 | 2.0 – 4.0 |
| 12258 | 12259 | 3.0 | 3.0 – 4.0 |
| 12260 | 12261 | 3.0 | 4.0 – 5.0 |
| 12262 | 12263 | 3.0 | 5.0 – 6.0 |
| 12264 | 12265 | 3.0 | 5.5 – 6.5 |
| 12266 | 12267 | 3.0 | 6.5 – 7.5 |
| 12268 | 12269 | 3.0 | 7.5 – 8.5 |
| 12270 | 12271 | 3.5 | 1.2 – 2.1 |
| 12272 | 12273 | 3.5 | 2.1 – 3.0 |
| 12274 | 12275 | 3.5 | 2.7 – 3.6 |
| 12276 | 12277 | 3.5 | 3.0 – 4.0 |
| 12278 | 12279 | 3.5 | 3.7 – 4.6 |
| 12280 | 12281 | 3.5 | 4.5 – 5.5 |
| 12282 | 12283 | 3.5 | 5.5 – 6.5 |
| 12284 | 12285 | 4.0 | 2.4 – 3.4 |
| 12286 | 12287 | 4.0 | 3.5 – 4.5 |
| 12288 | 12289 | 4.0 | 4.5 – 5.5 |
| 12290 | 12291 | 4.0 | 5.5 – 6.5 |
| 12292 | 12293 | 4.0 | 6.5 – 7.5 |
| 12294 | 12295 | 4.0 | 7.5 – 8.5 |
| 12296 | 12297 | 4.0 | 9.0 – 10.5 |
| 12298 | 12299 | 5.0 | 1.5 – 3.5 |
| 12300 | 12301 | 5.0 | 2.5 – 3.5 |
| 12302 | 12303 | 5.0 | 3.5 – 4.5 |
| 12304 | 12305 | 5.0 | 4.5 – 5.5 |
| 12306 | 12307 | 5.0 | 5.5 – 6.5 |
| 12308 | 12309 | 5.0 | 6.5 – 7.5 |
| 12310 | 12311 | 5.0 | 7.5 – 8.5 |
| 12312 | 12313 | 6.0 | 2.5 – 4.0 |
| 12314 | 12315 | 6.0 | 3.5 – 5.5 |
| Also available in other colours - call for quotation | | | |

Nylon Push Rivets are an economical, reusable method of securing parts together.



To use simply place rivet into pre-drilled hole and push head to secure. Lift head to unsecure and remove, rivets can be re-used.



Nylon Push Rivets resist corrosion and provide electrical protection.