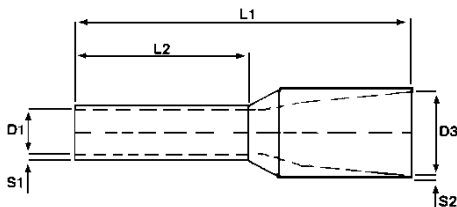


## TERMINATION PRODUCTS

### INSULATED FERRULES

Single Wire				
Cable Size (mm <sup>2</sup> )	Part No	Colour	Part No	Colour
0.50	30350	White	30370	Orange
0.75	30351	Blue	30371	White
1.00	30352	Red	30372	Yellow
1.50	30353	Black	30373	Red
2.50	30354	Grey	30374	Blue
4.00	30355	Orange	30375	Grey
6.00	30356	Green	30376	Black
10.00	30357	Brown	30377	Ivory
16.00	30358	Ivory	30378	Green
25.00	30359	Black	30379	Brown
35.00	30360	Red	30380	Beige
50.00	30361	Blue	30381	Olive

Twin Wire			
Cable Size (mm <sup>2</sup> )	Part No	Colour	L2 (mm)
2 x 0.50	30288	White	8.00
2 x 0.75	30289	Blue	8.00
2 x 0.75	30290	Blue	10.00
2 x 1.00	30291	Red	8.00
2 x 1.00	30292	Red	10.00
2 x 1.50	30293	Black	8.00
2 x 1.50	30294	Black	12.00
2 x 2.50	30295	Grey	10.00
2 x 2.50	30296	Grey	13.00
2 x 4.00	30297	Orange	12.00
2 x 6.00	30298	Green	14.00
2 x 10.00	30299	Brown	14.00
2 x 16.00	30300	Ivory	14.00



Dimensions							
mm <sup>2</sup>	AWG	L1	L2	D1	S1	D3	S2
0.50	20	14.0	8.0	1.0	0.15	2.6	0.25
0.75	18	14.6	8.2	1.2	0.15	2.8	0.25
1.00	17	14.6	8.2	1.4	0.15	3.0	0.25
1.50	16	14.6	8.2	1.7	0.15	3.5	0.25
2.50	14	15.2	8.2	2.2	0.15	4.0	0.25
4.00	12	16.5	9.0	2.8	0.20	4.4	0.30
6.00	10	20.0	12.0	3.5	0.20	6.3	0.30
10.00	7	21.5	12.0	4.5	0.20	7.6	0.40
16.00	6	22.2	12.0	5.8	0.20	8.8	0.40
25.00	3	29.0	16.0	7.3	0.20	11.2	0.40
35.00	2	30.0	16.2	8.3	0.20	12.5	0.50
50.00	1	36.0	19.0	10.3	0.30	15.0	0.60

### FERRULE ASSORTMENTS

Supplied in a Clear "Dispenser" Box

			0.50 mm <sup>2</sup> to 2.50 mm <sup>2</sup>		
Part No			30390	30391	
Contents	50	x 0.50	White	Orange	
	100	x 0.75	Blue	White	
	100	x 1.00	Red	Yellow	
	100	x 1.50	Black	Red	
	50	x 2.50	Grey	Blue	
			4.00 mm <sup>2</sup> to 16.00 mm <sup>2</sup>		
Part No			30392	30393	
Contents	50	x 4.00	Orange	Grey	
	20	x 6.00	Green	Black	
	20	x 10.00	Brown	Ivory	
	10	x 16.00	Ivory	Green	