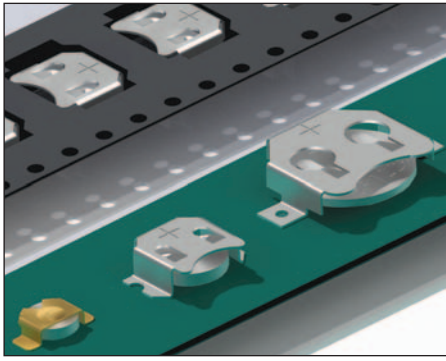


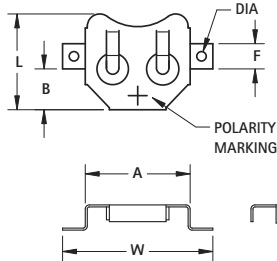
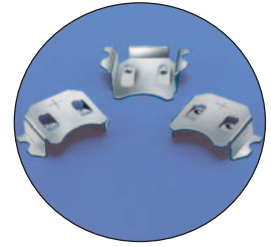
POSITIVE SURFACE MOUNT COMPACT CONTACTS



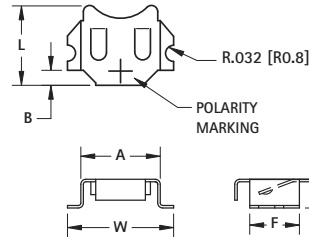
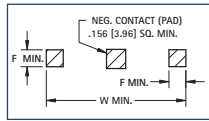
AVAILABLE ON TAPE AND REEL

SMT battery retainers are suited for high density PCB packaging. These contacts are ideal for automated placement in SMT applications. Engineered with reliable spring tension, these contacts assure low resistance while firmly securing the battery within the retainer.

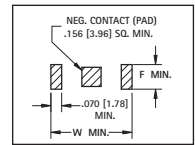
- Compatible with all wave and reflow operations
- Solder tails located outside of retainer body which facilitates visual inspection of the solder joints.
- Flow-hole solder tail designed for increased joint strength
- Compatible with most vacuum and mechanical pick & place assembly systems
- Matte Tin Finish for lower soldering temperatures needed for other temperature sensitive components
- Tin Nickel plated retainers are ideal for lead free, high temperature soldering applications
- All conductive polystyrene carrier tape meets ANSI/EIA-481 standards



Mounting Detail



Mounting Detail

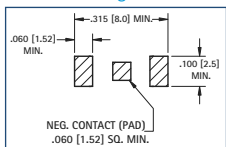


DWG. 1

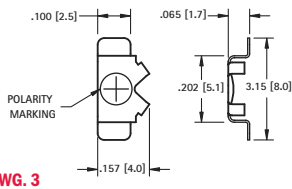
DWG. 2

TIN-NICKEL PLATE		MATTE TIN PLATE		MATERIAL: .010 (.25) Phosphor Bronze												
CAT. NO. BULK	CAT. NO. TAPE	CAT. NO. BULK	CAT. NO. TAPE	DWG. NO.	A	B	F	DIA	L	W	H	CELL DIA.	BATTERY REFERENCE	TAPE & REEL SPEC'S SUPPLIED ON 13" REELS		
2998	2998TR	3098	3098TR	2	.315 (8.0)	.060 (1.5)	.197 (5.0)	NO HOLE	.315 (8.0)	.421 (10.7)	.114 (2.9)	6.8mm	MC621, V364, SC621	24mm wide; 12mm pitch; 1250/reel		
2996	2996TR	3096	3096TR	1	.520 (13.2)	.203 (5.1)	.125 (3.2)	.052(1.3)	.475 (12.1)	.700 (17.8)	.235 (6.0)	11.6mm	SR44, LR44, 357, MS76, PX76A, G-13, 303, V313	32mm wide; 16mm pitch; 600/reel		
3000	3000TR	3080	3080TR	1	.520 (13.2)	.203 (5.1)	.125 (3.2)	.047(1.2)	.475 (12.1)	.745 (18.9)	.125 (3.2)	12mm	BR1216, CR1216, BR1220, CR1220, DL1225	32mm wide; 16mm pitch; 1000/reel		
3012	3012TR	3092	3092TR	1	.664 (16.9)	.281 (7.1)	.125 (3.2)	.047(1.2)	.594 (15.1)	.914 (23.2)	.156 (4.0)	16mm	BR1612, BR1616, CR1616, CR1620, DL1632	44mm wide; 24mm pitch; 600/reel		
3026	3026TR	3078	3078TR	1	.831 (21.1)	.317 (8.0)	.200 (5.1)	.093(2.4)	.782 (19.9)	1.210 (30.7)	.085 (2.2)	20mm	BR2016, CR2016, DL2016	44mm wide; 24mm pitch; 1000/reel		
3002	3002TR	3082	3082TR	1	.831 (21.1)	.317 (8.0)	.200 (5.1)	.093(2.4)	.782 (19.9)	1.210 (30.7)	.156 (4.0)	20mm	BR2016, CR2016, DL2020, CR2025, DL2025	44mm wide; 24mm pitch; 500/reel		
3004	3004TR	3084	3084TR	1	.939 (23.9)	.375 (9.5)	.200 (5.1)	.093(2.4)	.832 (21.1)	1.339 (34.0)	.156 (4.0)	23mm	BR2320, CR2320, BR2325, CR2325, DL2325	56mm wide; 32mm pitch; 400/reel		
3010	3010TR	3090	3090TR	1	.939 (23.9)	.375 (9.5)	.200 (5.1)	.093(2.4)	.819 (20.8)	1.339 (34.0)	.240 (6.1)	23mm	CR2354, DL2354	56mm wide; 32mm pitch; 200/reel		
3006	3006TR	3086	3086TR	1	1.000 (25.4)	.406 (10.3)	.200 (5.1)	.093(2.4)	.918 (23.3)	1.400 (35.6)	.156 (4.0)	24mm	CR2430, DL2430	56mm wide; 32mm pitch; 400/reel		
3008	3008TR	3088	3088TR	1	1.000 (25.4)	.406 (10.3)	.200 (5.1)	.093(2.4)	.890 (22.6)	1.400 (35.6)	.230 (5.8)	24mm	CR2450, DL2450	56mm wide; 32mm pitch; 200/reel		

Mounting Detail



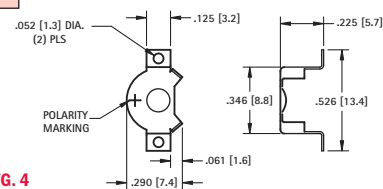
DWG. 3



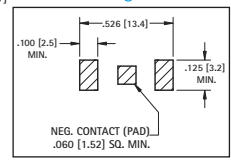
HEARING AID CELL



DWG. 4



Mounting Detail



7.9mm CELL

4.8mm CELL

CAT. NO. BULK	CAT. NO. TAPE	DWG. NO.	MATERIAL	FINISH	CELL DIA.	BATTERY REFERENCE	TAPE & REEL SPEC'S SUPPLIED ON 13" REELS
2994	2994TR	3	.006 (.15) Phosphor Bronze	Gold Plate	4.8mm	ML414, SR416	16mm wide; 8mm pitch; 1500/reel
2988	2988TR	4	.010 (.25) Phosphor Bronze	(Flash)	7.9mm	DA13, AZ13E, PR13H, V13AT	24mm wide; 12mm pitch; 1000/reel

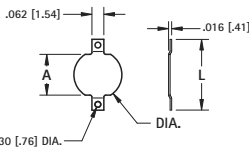
NEGATIVE SURFACE MOUNT COMPACT CONTACTS

- Economical
- Space saving
- Ideal for self-contained battery compartments
- Contact us for modifications and custom design
- Assures proper contact

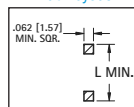


MATERIAL: .008 (.20) Brass

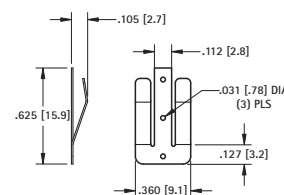
COMPACT



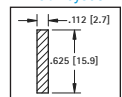
Pad Layout



SPRING CONTACT



Pad Layout



TIN-NICKEL PLATE		MATTE TIN PLATE					
CAT. NO. BULK	CAT. NO. TAPE	CAT. NO. BULK	CAT. NO. TAPE	L	A	DIA.	TAPE & REEL SPECS SUPPLIED ON 7" REELS
2991	2991TR	2981	2981TR	.368 (9.4)	.212 (5.4)	.250 (6.4)	16mm wide, 8mm pitch, 1500 pieces per reel
2992	2992TR	2982	2982TR	.289 (7.4)	.133 (3.4)	.186 (4.7)	16mm wide, 12mm pitch, 1000 pieces per reel

TIN-NICKEL PLATE		MATTE TIN PLATE	
CAT. NO. BULK	CAT. NO. TAPE	CAT. NO. BULK	CAT. NO. TAPE
2993	2993TR	2983	2983TR

MATERIAL: .010 (.25) Brass
Tape & Reel Spec's: 32mm wide; 20mm pitch; 13 inch reel (1500 pieces per reel)