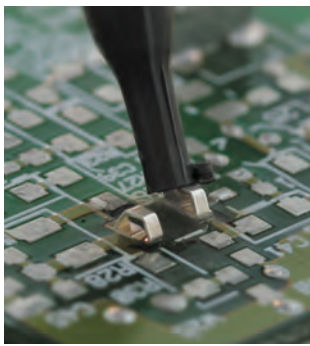


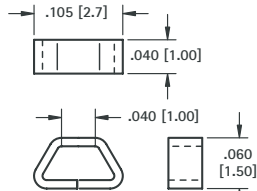
(SMT) SURFACE MOUNT TEST POINTS ON TAPE & REEL



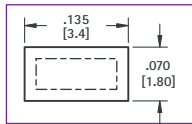
MINIATURE

- Ultra low profile, ideally suited for advanced surface mount printed circuit board applications
- Designed for long life and durability
- Manufactured using flat wire to provide a large mounting surface area
- Ideal for use with miniature probes, clips, and hooks
- Efficient, safe, board level testing

SUPPLIED ON TAPE AND REEL



Pad Layout



SPECIFICATIONS

Contact Material:

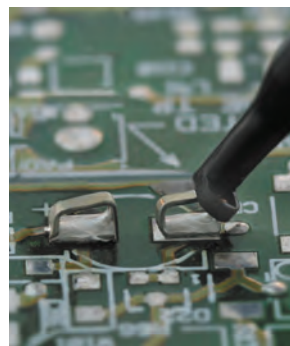
.010 (.25) thick Phosphor Bronze

Contact Finish:

Silver Plate
Tape Material: 8mm wide; 4mm pitch; conductive polycarbonate carrier tape meets ANSI/EIA-481 standard

CAT. NO. 5015 - 1000 pieces per reel

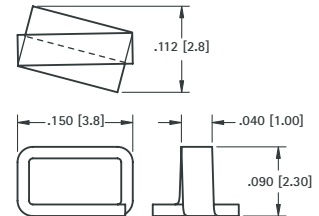
CAT. NO. 5017 - 5000 pieces per reel



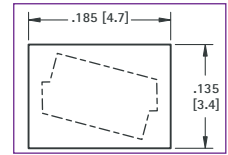
COMPACT

- Unique design provides exceptional strength and durability
- Simplifies testing on dense SMT circuit boards
- Ideal for use with most standard probes, clips and hooks
- Efficient, safe, board level testing

SUPPLIED ON TAPE AND REEL



Pad Layout



SPECIFICATIONS

Contact Material:

.015 (.38) thick Phosphor Bronze

Contact Finish:

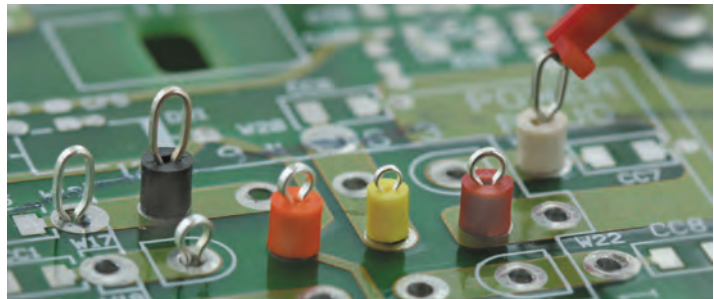
Silver Plate
Tape Material: 12mm wide; 4mm pitch; conductive polycarbonate carrier tape meets ANSI/EIA-481 standard

CAT. NO. 5016 - 1000 pieces per reel

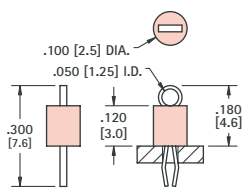
CAT. NO. 5018 - 5000 pieces per reel

(THM) THRU HOLE MOUNT TEST POINTS - COLOR KEYED

- Color keyed for visibility and quick identification
- Economical choice for PC test point terminations
- Snap-fit mounting provides positive retention for wave soldering
- Wire form loop for safe, non-slip testing
- Space saving, ultra low and low profile designs
- High profile design for difficult to reach applications
- Suitable for high density packaging on .062 (1.57) and .093 (2.36) PC boards
- Practical replacement for wire-wrap posts and turrets
- Secure grip for J hooks, EZ hooks, grabbers, alligator clips, tips or probes
- LCP base ideal for reflow soldering
- Ideal for reliable production testing and field service troubleshooting



MINIATURE



SPECIFICATIONS

Terminal:

.010 (.25) x .020 (.51) thick

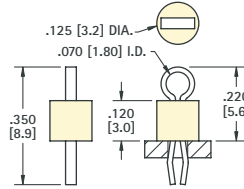
Phosphor Bronze Wire, Silver Plate

Base: PBT, UL Rated 94V-0

Mtg. Hole: .040 (1.0) Diameter

CAT. NO.	BASE COLOR
5000	RED
5001	BLACK
5002	WHITE
5003	ORANGE
5004	YELLOW

COMPACT



SPECIFICATIONS

Terminal:

.015 (.38) x .032 (.81) thick

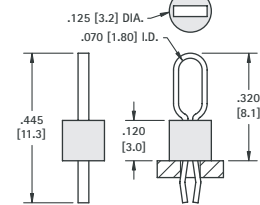
Phosphor Bronze Wire, Silver Plate

Base: PBT, UL Rated 94V-0

Mtg. Hole: .063 (1.6) Diameter

CAT. NO.	BASE COLOR
5005	RED
5006	BLACK
5007	WHITE
5008	ORANGE
5009	YELLOW

MULTIPURPOSE



SPECIFICATIONS

Terminal:

.015 (.38) x .032 (.81) thick

Phosphor Bronze Wire, Silver Plate

Base: PBT, UL Rated 94V-0

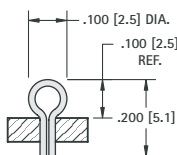
Mtg. Hole: .063 (1.6) Diameter

CAT. NO.	BASE COLOR
5010	RED
5011	BLACK
5012	WHITE
5013	ORANGE
5014	YELLOW

ULTRA LOW PROFILE

WITHOUT BASE

SHOWN AS INSTALLED INTO .040 [1.02] DIA. MOUNTING HOLE

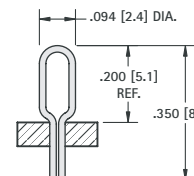


MATERIAL: .017 (.43) Diameter

Phosphor Bronze, Silver Plate

Mtg. Hole: .040 (1.0) Diameter

CAT. NO. 5021



SHOWN AS INSTALLED INTO .040 [1.02] DIA. MOUNTING HOLE

CAT. NO. 5020

SMT/THM TEST POINTS