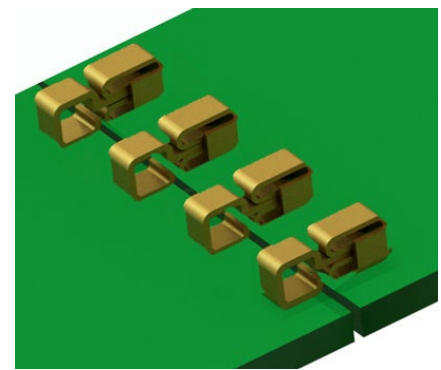
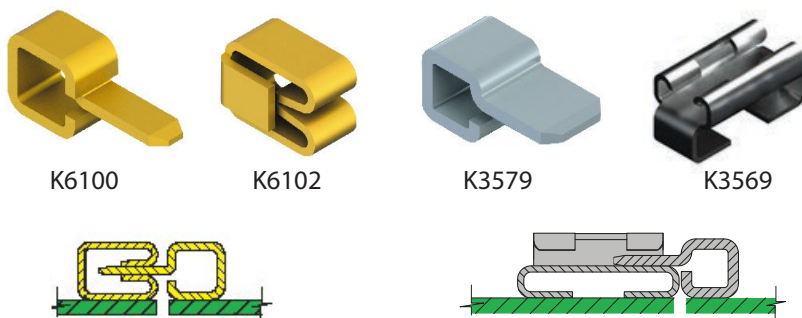


NEW SMT Low Profile PCB Edge Connectors



This new series of SMT PC Board Connectors is designed to pass signals or power across PC Boards.

Quick and easy to set-up, these space-saving SMT connectors have a horizontal orientation making them uniquely suitable as parallel board-to-board or board-to-component alternative options for power or signal transferring. These new connectors are designed to provide low profile circuit linkage and minimal footprint for high-density, high current PCB packages on power and aluminum backplanes. All PCB soldering applications, including reflow, may be utilized.

The female sockets (K6102) are equipped with side guides for additional reinforcement to minimize PCB movement when installed.

All Tape & Reel parts are packaged per ANSI/EIA-481 standard for compatibility with most vacuum and mechanical pick and place assembly systems.

PART NO.*	FINISH / PLATING	MATERIAL	CURRENT RATING	COMPAT. FEMALE TERMINAL	PACKAGING
K6100	Gold Plate	Phosphor Bronze	10 A	K6102 (board to board)	100 500 / Reel (TR)
K3579	Matte Tin	Brass	10 A	K3569 (board to board) K4469 (board to wire)	100 1000 / Reel (TR)

* For Tape & Reel version add "TR" to the end of the part number eg. "K6102TR"

Note: These items are newly released. Please check stock levels before ordering.