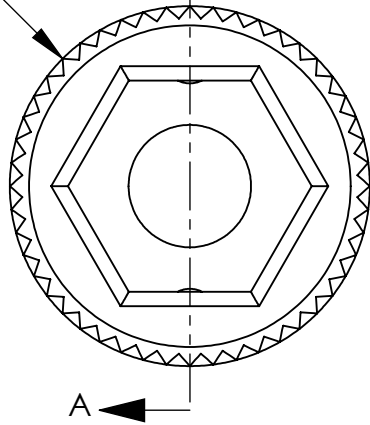
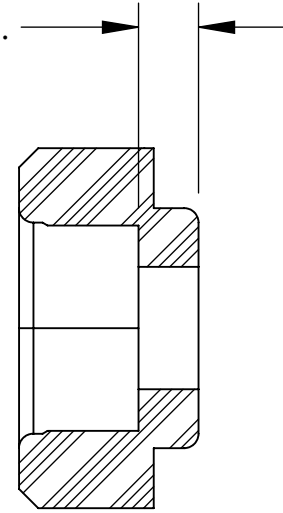


UNCONTROLLED DOCUMENT

$\phi .750 \pm .015$



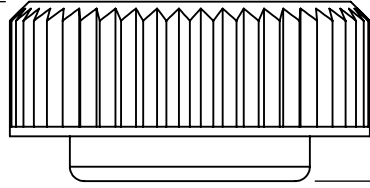
.125 REF.



SECTION A-A

NOTE: FITS 1/4" HEX NUTS AND
HEX HEAD CAP SCREWS.

$.281 \pm .015$



$.093 \pm .015$

WE RESERVE THE RIGHT
TO DISCONTINUE ITEMS,
CHANGE SPECIFICATIONS
OR DESIGN AT ANY TIME
WITHOUT NOTICE AND
WITHOUT INCURRING
ANY OBLIGATIONS

TOLERANCES UNLESS NOTED

- $\pm .005$ ON DIMENSIONS THRU $.625$
- $\pm .008$ ON DIMENSIONS $.626$ THRU 1.000
- $\pm .010$ ON DIMENSIONS 1.001 THRU 1.500
- $\pm .015$ ON DIMENSIONS LARGER THAN 1.500
- $\pm .015$ ON FRACTIONAL DIMENSIONS

PROPERTY OF		
MICRO PLASTICS INC.		
CATALOG DRAWING ROUND THUMB SCREW KNOB MICRO P/N 29RN147B DWG. # 29RN147B FILE SERVER\ENG\WEB		
MATERIAL:	NYLON 6/6; BLACK	
DATE	SCALE	DB
	2.5:1	